

LIVIT

LUXURY VINYL FLOORING



Thassos Marble

Livit... love it!

LiViT
features &
benefits



UFH Water Piped



Reaction to Fire



10yr Domestic
Warranty



Stable Rigid Core



Waterproof



Easy to Cut



i4F Click System



Hardwearing
& Durable



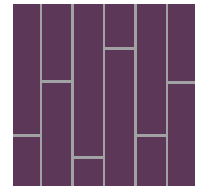
Underlay Attached



Slip Resistance

LiViT

LUXURY VINYL FLOORING



PLANK

LiViT rigid plank LVT provides a selection of realistic woodgrain designs suitable for use in any room in the home thanks to its waterproof and hardwearing properties.

Quickly create a stunning space thanks to the easy to fit rigid planks featuring the patented i4F click technology, perfect for any DIY enthusiast.



Lightning Oak



Dawn Oak



Thunder Oak



Twilight Oak

Plank Designs



DAWN OAK

LT01



DUSK OAK

LT02



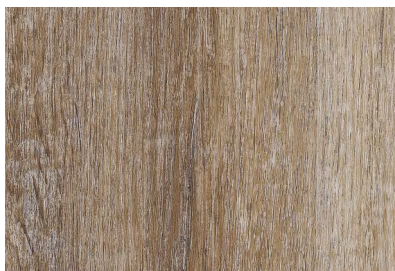
LIGHTNING OAK

LT05



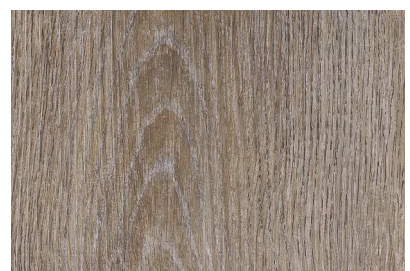
THUNDER OAK

LT06



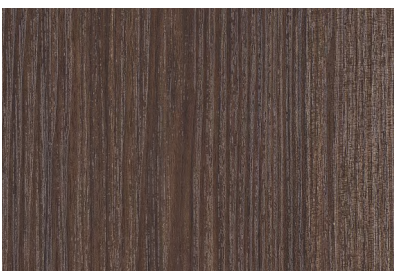
TWILIGHT OAK

LT03



STORM OAK

LT07



MIDNIGHT OAK

LT04

Pack size: 2.21m²	Width: 178mm	Length: 1244mm	Thickness: 5.0mm
--	------------------------	--------------------------	----------------------------

LiViT
features &
benefits



UFH Water Piped



Reaction to Fire



10yr Domestic
Warranty



Stable Rigid Core



Waterproof



Easy to Cut



i4F Click System



Hardwearing
& Durable



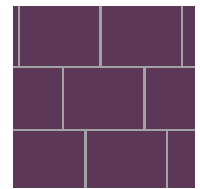
Underlay Attached



Slip Resistance

LiViT

LUXURY VINYL FLOORING



TILE

LiViT rigid tile LVT gives the look and feel of a traditional tile without the messy and time-consuming installation thanks to the patented i4F click technology.

The hardened Stone, Slate and Marble designs are sure to add a touch of luxury to any room whilst safe in the knowledge the flooring also boasts Slip Resistance qualities.

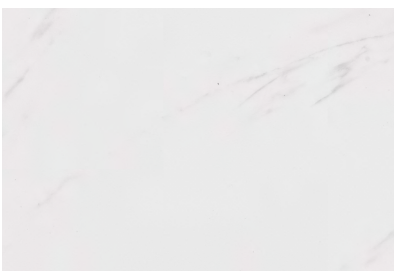


Vermont Slate



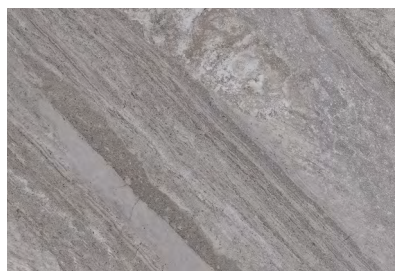
Himalayan Stone

Tile Designs



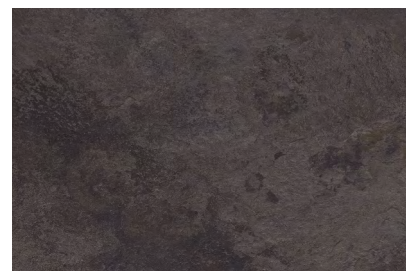
THASSOS MARBLE

LT30



HIMALAYAN STONE

LT31



VERMONT SLATE

LT32

Pack size: 2.21m²	Width: 303mm	Length: 607mm	Thickness: 5.0mm
--	------------------------	-------------------------	----------------------------



5.0mm/0.30mm Product Technical Data

Domestic: Including kitchens and bathrooms

Commercial: Shops | Salons | Boutiques | Takeaways | Restaurants

Subject	Main Parameter	Reference Standard
Type of flooring	Heterogeneous PVC floor covering	ISO 10582
Profile	I4F	
Classification	23/31	ISO 10874
Component	PVC plasticizer stabilizer CaCO ₃	
Structure	PU coating, wear layer, print film, extruded PVC layer, IXPE foam layer	
Size	Length deviation ≤0.15% up to 0.5mm maximum. Width deviation ≤0.10% up to 0.5mm maximum.	ISO 24342
Squareness, mm	≤0.25mm (side≤400mm) ≤0.35mm (side>400mm)	ISO 24342
Straightness, mm	≤0.25mm (side≤400mm) ≤0.35mm (side>400mm)	ISO 24342
Overall thickness	+0.13 mm/-0.10 mm	ISO 24346
Wear layer thickness	+13 %/-10 %	ISO 24340
Surface treatment	PU coating	
Bevelled edges	Yes	
Colour fastness	Minimum 6	ISO 105-B02
Dimensional stability	≤0.25 %	ISO 23999
Total mass per unit area	7.86 kg/m ² +13 %/-10 %	ISO 23997
Residual indentation (average)	≤0.35 mm	ISO 24343-1 ISO 19322
Reaction to fire	Bfl-s1	EN 13501-1
Chemical resistance	Class 0, excellent	ISO 26987
Effect of a castor chair	10,000 cycle no delamination	ISO 4918 EN 16511
Sound reduction	ΔLw = 15 dB	ISO 717-2
Thermal resistance	0.054 (m ² .K)/w	EN 12664
Thermal conductivity	0.087 w/(m.K)	EN 12664
Slip resistance	≥R9 (tile) ≥R10 (plank)	DIN 51130
Slip resistance	DS	EN 13893
Slip resistance	Wet condition: 44 (tile) / 35 (plank) Dry condition: 55 (tile) / 52 (plank)	BS 7976-2
Packaging unit	178 mm x 1244 mm x 2.21 m ² per pack / 65 packs per pallet 303 mm x 607 mm x 2.21 m ² per pack / 66 packs per pallet	
Hardness	73°+/-5°	ISO 868
Product Weights	178 x 1244 mm plank 18kg per pack / 1200kg per pallet 303 x 607 mm tile 18kg per pack / 1200kg per pallet	
Abrasion resistance	Group T	EN660-2
Toxicity	Not toxic, not contain heavy metal	EN71-3
Formaldehyde	E1	EN717-1
Features	PU coating, easy to clean / Durable wear layer / Slip resistant Easy fit click system / Underlay backing incorporated	
Using area	Domestic residential / light commercial	
Underfloor heating use	Yes – Concrete encased water piped systems only. Max 27°C at floor level.	

Livit... love it!



Twilight Oak



To order a sample please email samples@idsurfaces.co.uk or call 0845 7 298 298